

LIGHTING PRODUCTS CATALOGUE



PRO YARD TECHNOLOGIES



PRO YARD TECHNOLOGIES
LGF 28, Block K, Ansal Fortune
Arcade, Sector 18, NOIDA,
Uttar Pradesh-201301

COMPANY OVERVIEW

Our story began in Delhi NCR in 1980 by Mr. Bhagwan Motwani Ji who has an impeccable experience of 41 years and counting in the Electronics sector. It is his endeavours and dauntlessness for his work that has risen us. Post that, Mr. Divakar Motwani who has an impeccable experience of 12 years and counting as a Serial Entrepreneur discovered something incredible and unique which is known as Pro Yard Technologies. It started as a limited armed force that has sprouted into a full-fledged organization because of its progressive ideology. Ever since our beginning, our experts have led our organization to make and execute broad electronic strategies and help our clients with setting up what's next in advancement while streamlining and improving their present. For our organization, our clients and partners are more like family, and our focus is that troublesome work is compensated and singular pursuits are enabled. Quality is one core viewpoint on which we can never compromise. Having a relationship with the most favoured sellers, we obtain top-tier technologies, have items and offer those to our customers while taking into account their particular planned rigid quality estimate that aids in offering the best to our assorted customers. Pro Yard Technologies strives to attain goodwill in the market and has the vision to offer services in various sectors. We empower the will entrepreneurs and hence have our motto as "Vision of Entrepreneurs".



INDEX

- ① LED INDOOR & OUTDOOR LIGHTING
- ② DEEP LIGHT & SPOT LIGHTS
- ③ LAWN & GARDEN LIGHTS
- ④ LED STREET & FLOOD LIGHTS
- ⑤ INDUSTRIAL LIGHTING
- ⑥ LED STRIP LIGHTS
- ⑦ HIGHBAY LIGHTS
- ⑧ MCB, WIRE AND SWITCHES



HIGHBAY LIGHTS

Model	Power	Mounting	Colour
PYT-50W-HBL-5	50W	Surface	CW/NW/WW
PYT-100W-HBL-5	50W	Surface	CW/NW/WW



PROFILE LIGHTS

Model	Power	Mounting	Colour
PYT-20W-PROL-1	20W	Surface	CW/NW/WW
PYT-40W-PROL-2	40W	Surface	CW/NW/WW
PYT-60W-PROL-3	60W	Surface	CW/NW/WW



FOOT & GARDEN LIGHTS

Model	Power	Mounting	Colour
PYT-3W-FGL-37	3W	Wall Flush	CW/NW/WW

TILTED CONCEALED LIGHT

Model	Power(W)	Voltage	Colour
PYT- 5W TCL1	5W	120-265V	CW/NW/WW
PYT- 7W TCL2	7W	120-265V	CW/NW/WW



RIMLESS SURFACE



Model	Power(W)	Voltage	Colour
PYT-5W-RSL22	5W	120-280V	CW/NW/WW
PYT-8W-RSL23	8W	120-280V	CW/NW/WW
PYT-10W-RSL2	10W	120-280V	CW/NW/WW
PYT-12W-RSL2	15W	120-280V	CW/NW/WW



3 IN 1 SURFACE LIGHT

Model	Power(W)	Voltage	Colour
PYT-5W-SL6	5W	120-280V	3 IN 1
PYT-8W-SL5	8W	120-280V	3 IN 1
PYT-10W-SL4	10W	120-280V	3 IN 1
PYT-12W-SL4	12W	120-280V	3 IN 1



TRACK LIGHTS

Model	Power	Volatge	Colour
PYT-10W-TKL-54	10W	120-265V	CW/NW/WW
PYT-20W-TKL-11	20W	120-265V	CW/NW/WW

STREET LIGHTS

Model	Power	Mounting	Colour
PYT-24W-SL-24	24W	Pole Mounting	CW/NW/WW
PYT-30W-SL-25	30W	Pole Mounting	CW/NW/WW
PYT-50W-SL-26	50W	Pole Mounting	CW/NW/WW
PYT-70W-SL-27	70W	Pole Mounting	CW/NW/WW





JUNCTION BOX LIGHT

Model	Power(W)	Volatge	Colour
PYT-3W-JBL-4	3W	120-265V	CW/NW/WW
PYT-6W-JBL-1	6W	120-265V	CW/NW/WW
PYT-12W-JBL-1	12W	120-265V	CW/NW/WW



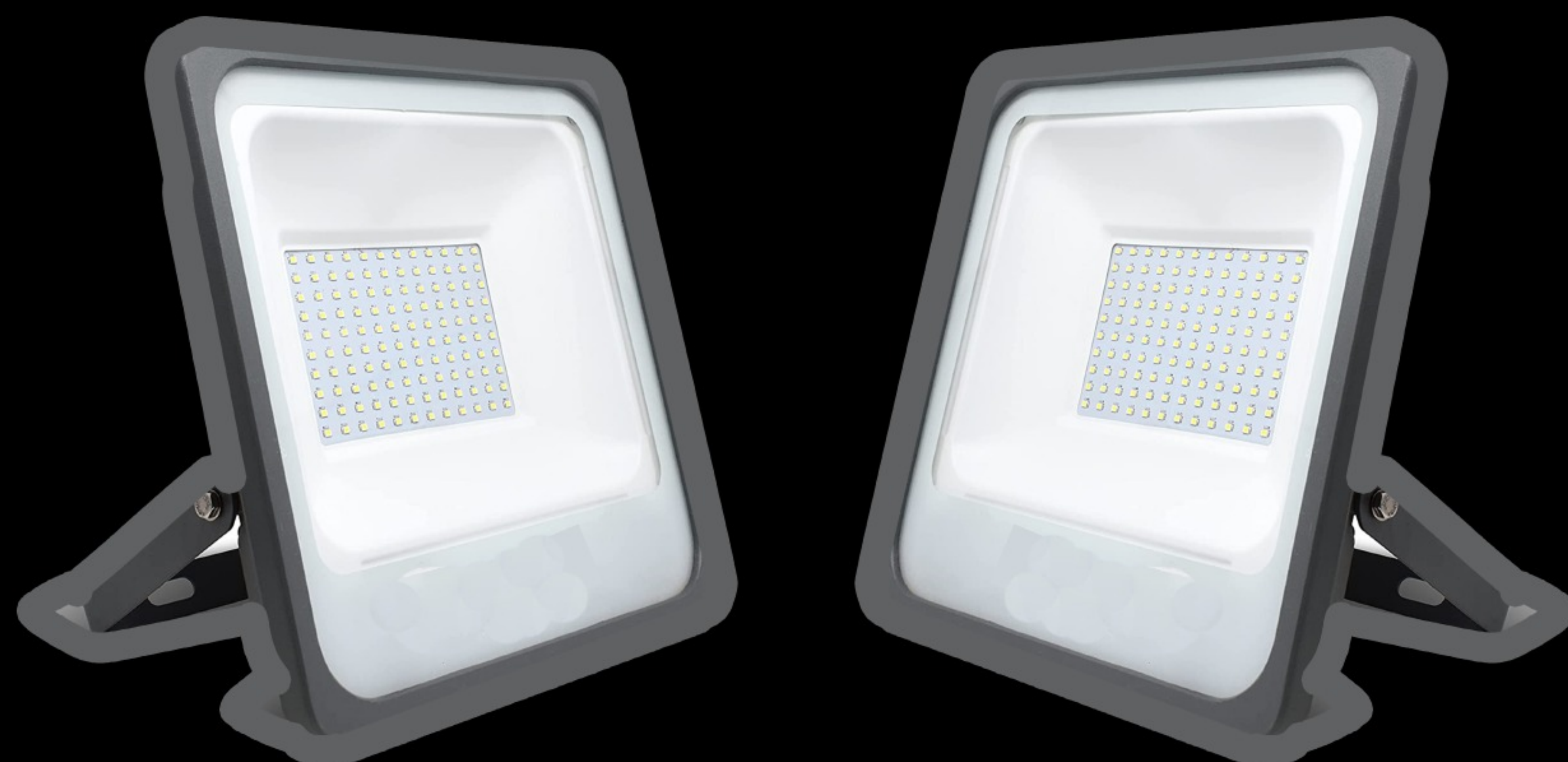
SURFACE COB CYLINDER

Model	Power(W)	Volatge	Colour
PYT-6W-COB-S1	6W	120-265V	CW/NW/WW
PYT-8W-COB-S4	8W	120-265V	CW/NW/WW



SMD CABINET LIGHTS

Model	Power(W)	Volatge	Colour
PYT-6W-SMD-S1	6W	120-265V	CW/NW/WM



FLOOD LIGHTS

Model	Power	Mounting	Colour
PYT-20W-FL-5	20W	Pole/wall/Surface	CW/NW/WW
PYT-30W-FL-4	30W	Pole/wall/Surface	CW/NW/WW
PYT-50W-FL-3	50W	Pole/wall/Surface	CW/NW/WW
PYT-100W-FL-2	100W	Pole/wall/Surface	CW/NW/WW



STRIP LIGHTS

Model	Power	Volatge	Colour
PYT-6W-STPL-11	6W	240V	CW/NW/WW
PYT-7W-STPL-7	7W	240V	CW/NW/WW
PYT-10W-STPL-2	10W	240V	CW/NW/WW



SPOT LIGHT

Modal	Power(W)	Voltage	Color
PYT- 2W TCL1	2W	120-265V	CW/WW/NW/RD/BL/BL/GR/PK

EDGLIT SURFACE PANEL



Modal	Power(W)	Voltage	Color
PYT-ESL-0123	3W-10W	120-265V	CW/WW/NW/RD/BL/BL/GR/PK



SLIM RECESSED BACKLIT PANEL LIGHT

Modal	Power(W)	Voltage	Color
PYT-RBPL-0123	36W	120-265V	CW/WW/NW/RD/BL/BL/GR/PK

MINIATURE CIRCUIT BREAKER

CONSTRUCTION AND FEATURE



- Protection against both overhead and short circuit
- High Short-circuit capacity
- Contact Position indication
- Application to terminal and pin/fork type busbar connection
- Easy Mounting onto 35mm DIN rail

TECHNICAL DATA



- Pole No. 1,2,3,4
- Rated Volatage AC 230/400V
- Rated current(A) : 1,2,3,4,6,10,13,16,20,25,32,40,,50,63
- Rated Frequency : 50/60hz
- Energy Limiting calss : 3
- Retad impluse Calss : 3
- Reted Impluse withstand :> 6000
- Installation : Mounting
- Connection Capacity : Rigid Conductor up to 25mm²
- Fastening Torque : 2.0m

WIRES

Nominal area of conductor sq. mm	Code
0.5 sq. mm	PYT-W-051
0.75 sq. mm	PYT-W-075
1.0 sq. mm	PYT-W-017
1.5 sq. mm	PYT-W-011
2.5 sq. mm	PYT-W-026
4.0 sq. mm	PYT-W-023
6.0 sq. mm	PYT-W-045



ELECTRICAL SWITCHES



ELECTRICAL SWITCHES ARE ELECTROMECHANICAL DEVICES THAT ARE USED IN ELECTRICAL CIRCUITS TO CONTROL POWER, DETECT WHEN SYSTEMS ARE OUTSIDE THEIR OPERATING RANGES, SIGNAL CONTROLLERS OF THE WHEREABOUTS OF MACHINE MEMBERS AND WORK PIECES, PROVIDE A MEANS FOR MANUAL CONTROL OF MACHINE AND PROCESS FUNCTIONS, CONTROL LIGHTING, AND SOON. SWITCHES COME IN A VARIETY OF STYLES AND ARE ACTUATED BY HAND, FOOT, OR THROUGH THE DETECTION OF PRESSURE, LEVEL, OR OBJECTS. SWITCHES CAN BE SIMPLE ON-OFF TYPES OR CAN HAVE MULTIPLE POSITIONS THAT, FOR INSTANCE, CAN CONTROL THE SPEED OF A MULTI-SPEED FAN. SWITCH OPERATORS CAN BE FOUND IN VARIOUS SHAPES AND SIZES, SUCH AS TOGGLES OR BUTTONS, AND CAN BE FURNISHED IN A VARIETY OF COLORS.

WALL SWITCHES



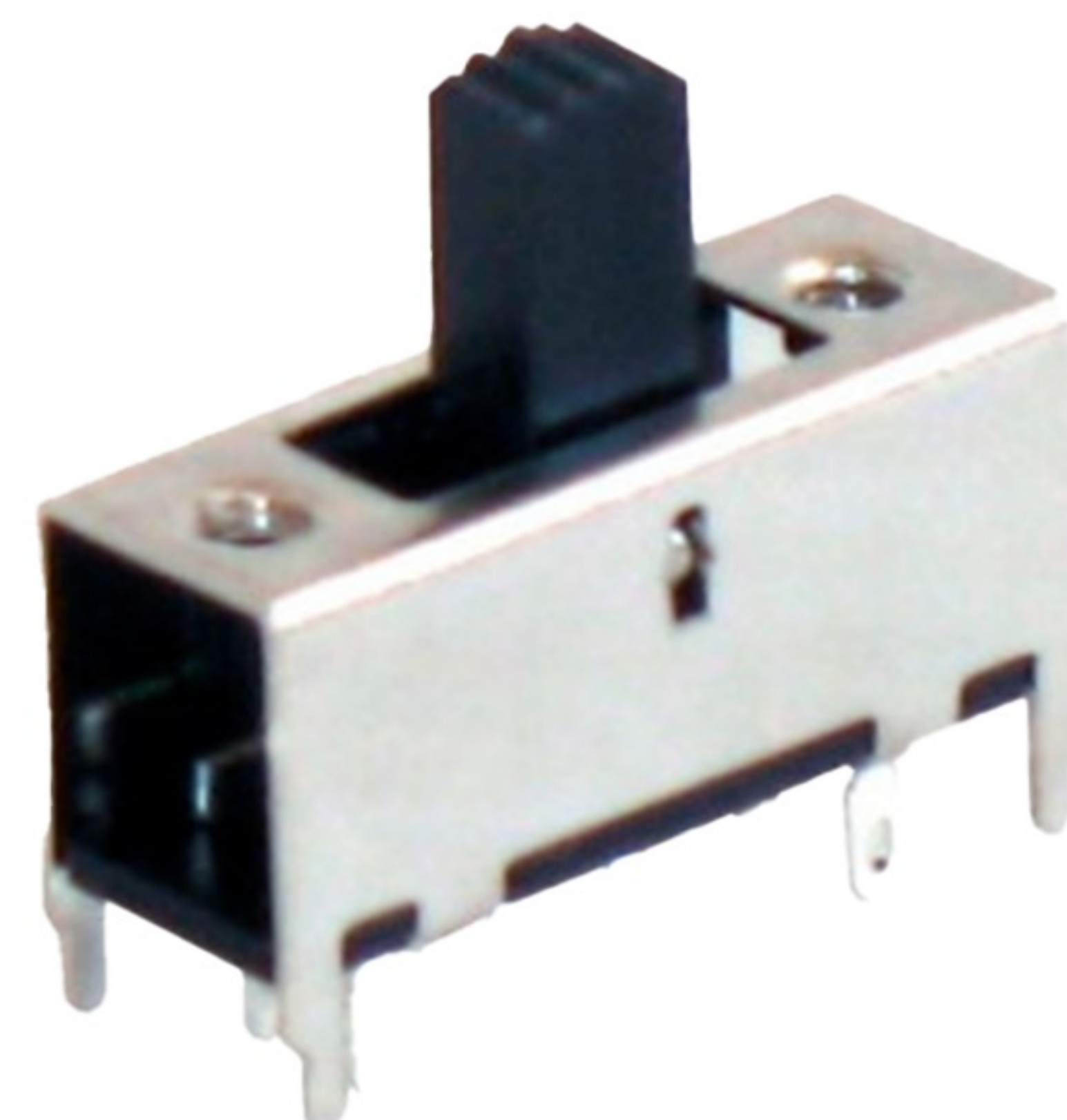
WALL SWITCHES ARE HAND OPERATED ELECTRO-MECHANICAL DEVICES USED IN RESIDENTIAL AND COMMERCIAL BUILDINGS MOST COMMONLY FOR LIGHTING CONTROL. THEY ARE ALSO USED TO CONTROL CEILING FANS AND ELECTRICAL OUTLETS. KEY SPECIFICATIONS INCLUDE COMBINATION DEVICE FUNCTION, ACTUATOR TYPE, AND ADDITIONAL SWITCH FUNCTIONS SUCH AS DIMMER CONTROL, FAN SPEED CONTROL, OR TIMERBASED SWITCHING. WALL SWITCHES ARE SPECIFICALLY DESIGNED TO OPERATE ON LINE VOLTAGE AND FIT INSIDE STANDARD ELECTRICAL BOXES. THEY ARE STANDARD ITEMS IN RESIDENTIAL AND COMMERCIAL CONSTRUCTION. A VARIETY OF DECORATOR OR DESIGNER STYLES CAN SET THESE SWITCHES APART FROM INDUSTRIAL SWITCHES WHERE AESTHETICS ARE LESS OF A CONCERN.

TOGGLE SWITCHES



TOGGLE SWITCHES ARE HAND OPERATED ELECTRO-MECHANICAL DEVICES USED FOR SWITCHING CIRCUITS. THEY ARE ACTUATED BY A LEVER WHICH IS PUSHED THROUGH A SMALL ARC. MOVING THE LEVER BACK AND FORTH OPENS AND CLOSSES AN ELECTRICAL CIRCUIT, WHILE THE LEVER POSITION GIVES A QUICK VISUALIZATION OF THE CIRCUIT STATUS.

SLIDE SWITCHES



SLIDE SWITCHES ARE HAND OPERATED ELECTRO-MECHANICAL DEVICES USED FOR SWITCHING CIRCUITS. THE SWITCH OPERATOR IS IN THE FORM OF A SLIDER THAT MOVES FROM POSITION TO POSITION TO CONTROL THE CIRCUIT STATUS. KEY SPECIFICATIONS INCLUDE SINGLE-THROW OR DOUBLE-THROW SWITCHING FUNCTION, MOUNTING TYPE, AND PANEL CUT-OUT DIMENSIONS.

ROTARY SWITCHES

ROTARY SWITCHES ARE HAND OPERATED ELECTRO-MECHANICAL DEVICES USED FOR SWITCHING CIRCUITS AND SELECTING FUNCTIONS. ROTARY SWITCHES CAN BE TWO-POSITION, ON-OFF, OR THEY CAN HAVE MULTIPLE DISCRETE STOPS. KEY SPECIFICATIONS INCLUDE NUMBER OF POLES, NUMBER OF POSITIONS, CONSTRUCTION TYPE, MOUNTING TYPE, AND PANEL CUT-OUT DIAMETER FOR PANEL MOUNT SWITCHES



ROCKER SWITCHES

ROCKER SWITCHES ARE HAND OPERATED ELECTRO-MECHANICAL DEVICES USED FOR SWITCHING CIRCUITS. THE SWITCH OPERATOR POSITION, RAISED OR DEPRESSED, GIVES A QUICK VISUAL INDICATION OF THE CIRCUIT'S ON OR OFF STATUS. KEY SPECIFICATIONS INCLUDE SINGLE-THROW OR DOUBLE-THROW SWITCHING FUNCTION, MOUNTING TYPE, ACTUATOR TYPE, AND PANEL CUT-OUT DIMENSIONS.



PUSHBUTTON SWITCHES



PUSHBUTTON SWITCHES, ALSO REFERRED TO AS PUSH SWITCHES, ARE HAND OPERATED ELECTRO-MECHANICAL DEVICES USED FOR SWITCHING CIRCUITS. THEY ARE THE MOST COMMON VARIETY OF SWITCH USED ON INDUSTRIAL CONTROL PANELS. KEY SPECIFICATIONS INCLUDE SINGLE-THROW OR DOUBLE-THROW SWITCHING FUNCTION, CONTACT TYPE, MOUNTING TYPE, ACTUATOR TYPE, AND PANEL CUT-OUT DIAMETER. THE 30 MM CUT-OUT IS A COMMON INDUSTRIAL SIZE.

LIMIT SWITCHES



LIMIT SWITCHES ARE ELECTRO-MECHANICAL DEVICES DESIGNED TO SENSE MOTION AND POSITION MECHANICALLY AND PROVIDE OUTPUT SIGNALS TO A CONTROLLER. THEY ARE AVAILABLE AS BARE SWITCHES, OR IN RUGGED ENCLOSURES INTENDED FOR THE TOUGH ENVIRONMENT OF A FACTORY FLOOR.

INTERIOR LIGHTING

HAVING THE IDEAL LIGHTING IN A ROOM IS AS FUNDAMENTAL AS FURNISHING IT. LIGHT ALLOWS TO ENJOY THE SPACES TO THE FULLEST, TO CREATE EVOKING ATMOSPHERES AND TO CARRY OUT ONE'S FAVORED ACTIVITIES, LIKE READING A NICE BOOK, COOKING OR GATHERING AROUND A TABLE, EVEN IN THE EVENING HOURS. SOMETIMES THE PERFECT LIGHT CAN GIVE A NEW SOUL TO SPACES, RESHAPING THEM.

PENDANT LAMPS



Skynest is the newest creation by Marcel Wanders studio for Flos. By weaving filaments of light, this unique lamp seamlessly combines both elegance and technical innovation. Skynest has the typical pendant light shape, with a central core and with what, at first glance, looks like a lampshade.

CEILING LAMPS



Skynest is the newest creation by Marcel Wanders studio for Flos. By weaving filaments of light, this unique lamp seamlessly combines both elegance and technical innovation. Skynest has the typical pendant light shape, with a central core and with what, at first glance, looks like a lampshade.

WALL LAMPS



Wall spot is a versatile wall light for the bathroom, hallway, kitchen or living room. The wall spot has a perforated shade for a pleasant diffusion of light. Taking a stand for products with longevity, Vipp lamps are made to be fitted with a replaceable bulb, such as LED, giving them long-term functionality.

CEILING LAMPS



Floor lamp providing direct light. Lead-free glass base. Satin-finish stainless steel telescopic stem. Pressed, polished and zapon-varnished aluminum swiveling and height-adjustable reflector

TABLE LAMPS



Table lamps are an excellent and effective solution for those who need a directional light source and a space-saving support. The versatility, different types and compact dimensions that characterize this lighting element allow the table lamps to be inserted in a variety of environments, from residential to professional.

TRACK-LIGHTS



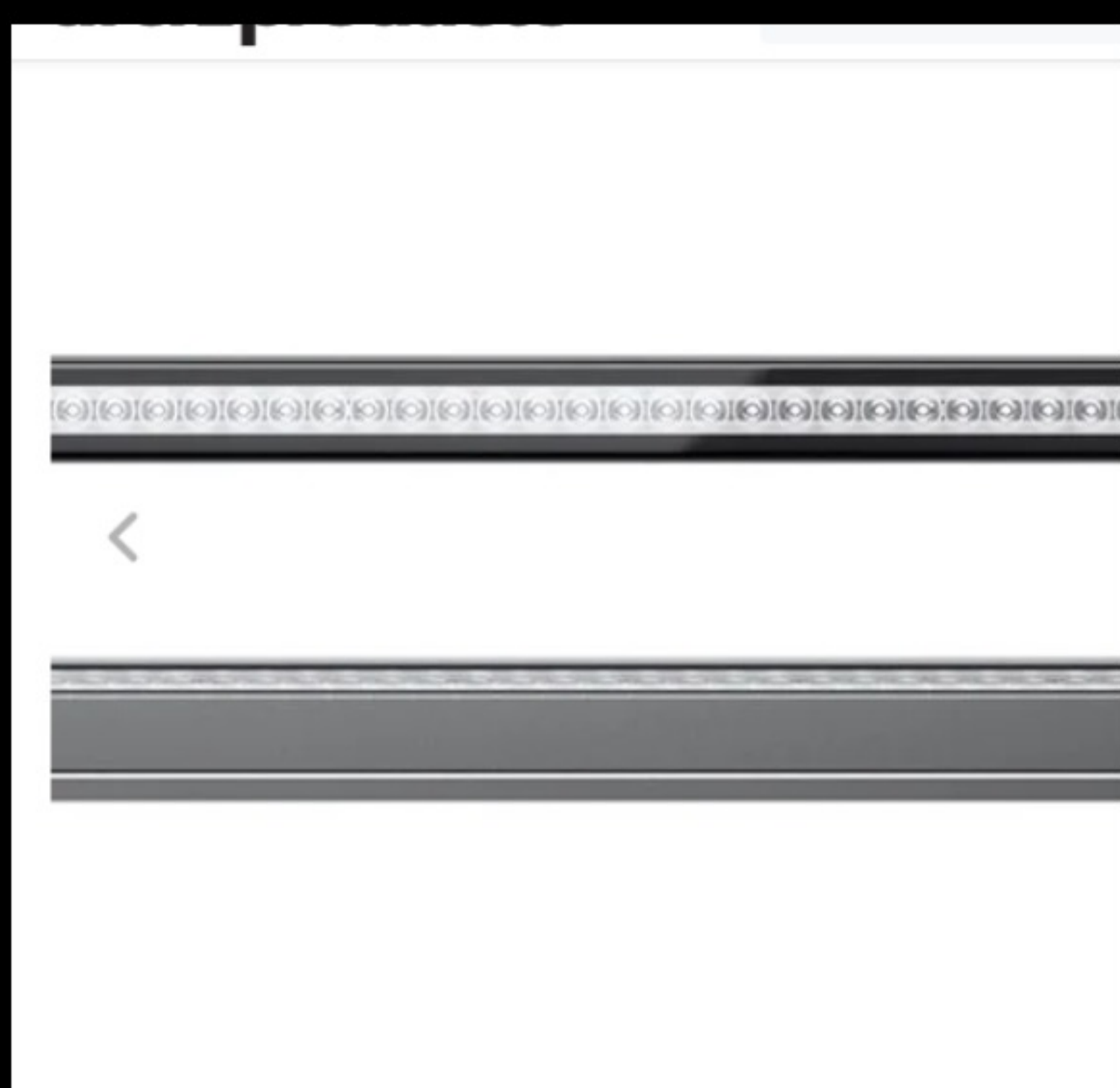
Track lighting consists of a series of lights that run on a metal or plexiglass structure, to which adjustable spotlights or pendant lamps are attached. Specifically, the most common track lighting systems are those using spotlights or lamps mounted on tracks recessed in the ceiling

SPOTLIGHTS



Spotlights are a widely used solution for interior lighting because they can integrate perfectly into any context and adapt to any style, from classic to modern. Each type of spotlight - or light spot - is designed to meet special lighting requirements. The structure can be made of different materials - plaster, metal, steel.

LINEAR LIGHTING PROFILES



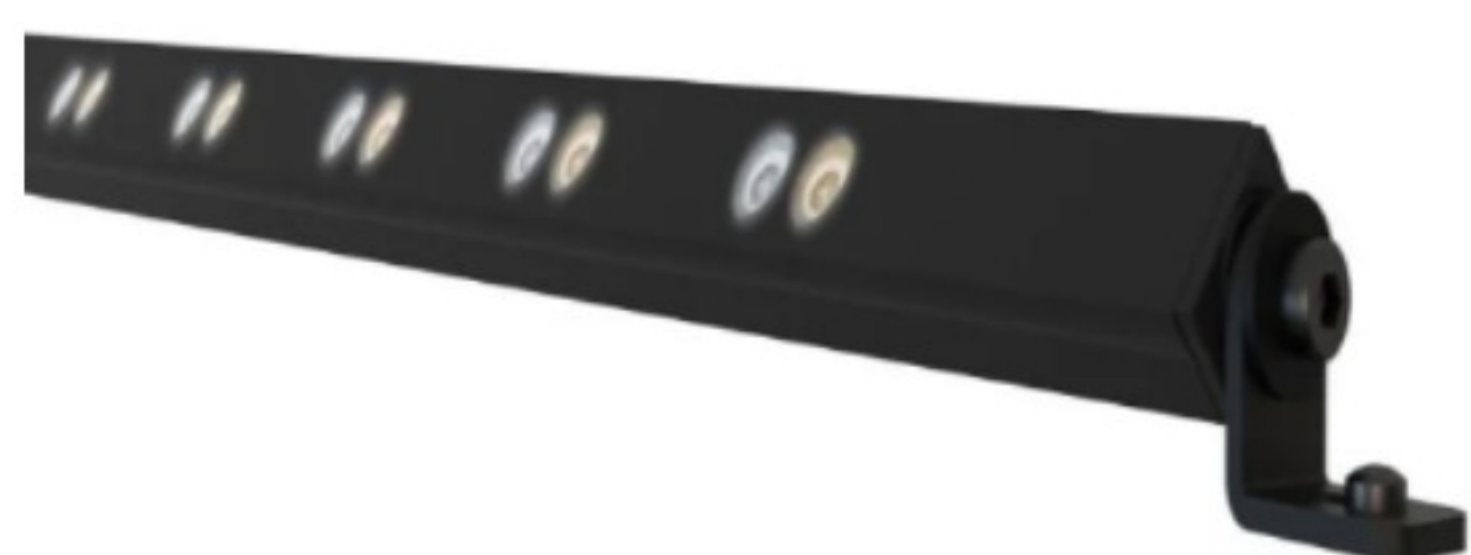
Track lighting consists of a series of lights that run on a metal or plexiglass structure, to which adjustable spotlights or pendant lamps are attached. Specifically, the most common track lighting systems are those using spotlights or lamps mounted on tracks recessed in the ceiling.

STEPLIGHTS



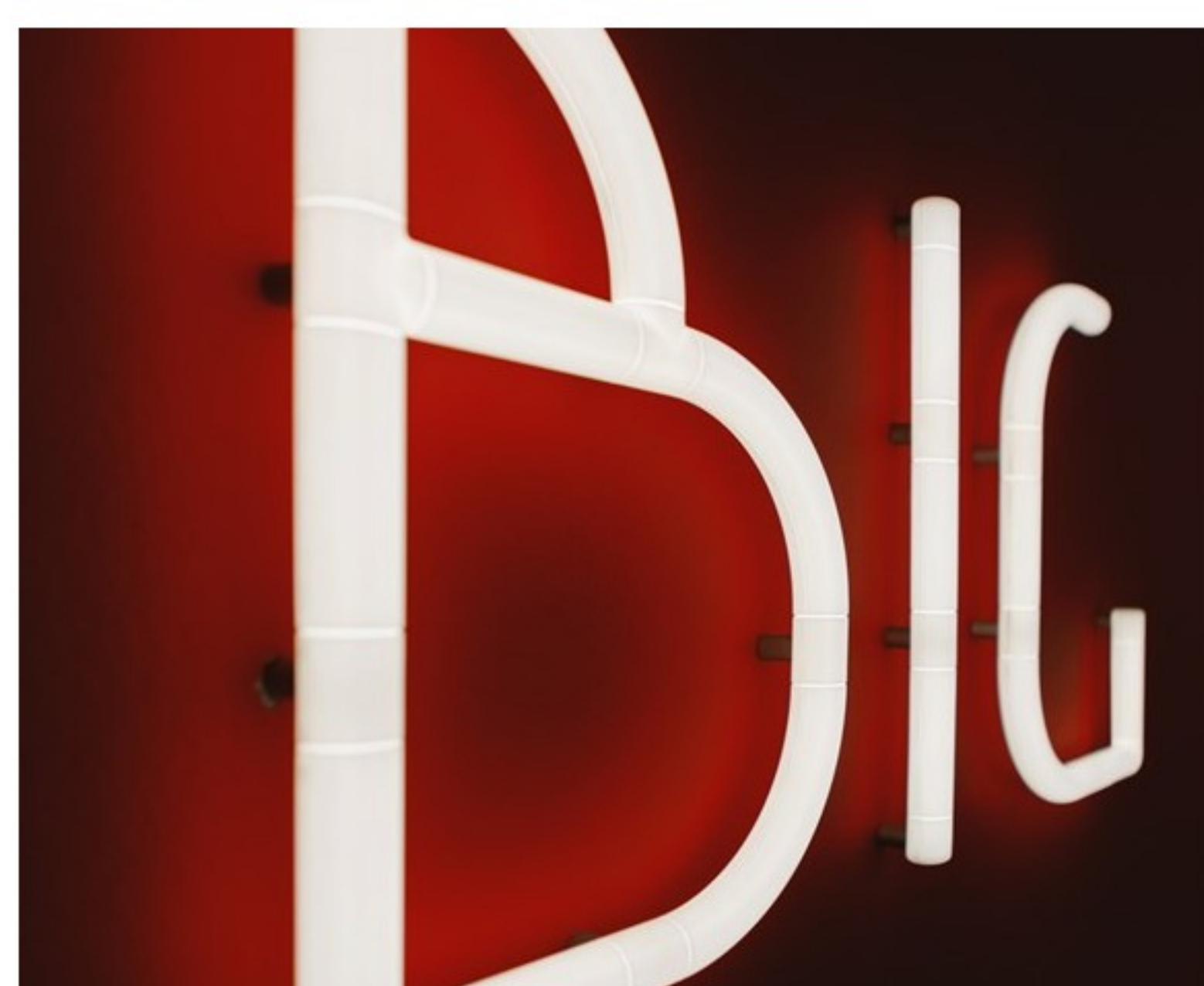
The steplight is a type of lighting solution for indoor use with which to create luminous paths thanks to the installation of a number of splashes that will vary according to the size of the space to be illuminated. The main function of step lights is to allow you to orient yourself in the dark thanks to light beams installed along stairs and corridors inside a dwelling or a commercial space.

FURNITURE LIGHTING



Lighting and furniture make a significant duo that finds the maximum expression in furniture lighting. Incorporating one or more light spots into a piece of furniture may look like a secondary option, but, on the contrary, is a practical and beautiful furnishing solution, capable to catch the eye with light contrasts and fine harmonies.

LIGHT LETTERS



Chosen individually or to compose words, light letters are one of the main trends in home decor, a sort of playful creativity that makes thoughts visible and open to be shared in your home space. The technological complexity of these lighting engineering products goes hand in hand with the elemental alphanumeric language in an infinite abacus of possible choices

LAMPSHADES



Lampshades can be considered with no doubt a basic element that characterizes any type of lamp. It is indeed enough to combine a lampshade with a bulb socket to a base or a cable to obtain endless lighting solutions; from pendant lamps to table lamps, from ceiling lamps to the taller and more complex floor lamps.

EMERGENCY LIGHTING



The availability of an emergency lighting system, in workplaces and activities subject to crowding, is a fundamental safeguard for the safety of occupants and rescuers in the event of an emergency. During or following a critical event (fire, earthquake, flood, etc.), may not be operational because it is damaged by the event itself or because it has been properly deactivated by rescue workers.

OUTDOOR LIGHTING

GARDENS, PATIOS, TERRACES, FAÇADES; WHATEVER THE SURFACE YOU HAVE TO LIGHT UP, YOU WILL NEED A PRECISE LIGHTING ELEMENT. ON ARCHIPRODUCTS YOU CAN CHOOSE FROM A VAST ARRAY OF DESIGN OUTDOOR LAMPS TO SUIT ALL NEEDS. FROM GARDEN LAMP POSTS, TO OUTDOOR PENDANT LAMPS, FROM FLOODLIGHTS FOR ARCHITECTURE.

OUTDOOR WALL LAMPS



The availability of an emergency lighting system, in workplaces and activities subject to crowding, is a fundamental safeguard for the safety of occupants and rescuers in the event of an emergency. During or following a critical event (fire, earthquake, flood, etc.), may not be operational because it is damaged by the event itself

OUTDOOR CEILING LAMPS



An evening in the garden under the pergola, a dinner on the terrace, a chat with friends on the balcony. How to light these spaces to enhance them even in the darkest hours of the summer evenings? Choosing the right light is crucial.

TABLE LAMPS



Gustave is a portable, self-powered luminaire, specially designed for tabletop lighting applications and other related uses as supplementary lighting. Gustaves compact size encloses a perfect mix of the most innovative optical and light technology and a disruptive engineering.

FLOOR LAMP



The Factory is an outdoor floor lamp. The mesh is made of aluminum, while the internal part is made of polyethylene resin by rotational molding. Suitable for indoors and outdoors. Available in various finishes and sizes.

PENDANT LAMPS



Elegance, lightness and clean form made with concrete similar in its appearance to the mix of the original project, but varied in its composition to stand up to weathering. It is provided with a long cable to be wrapped, for example, around a pole or a tree branch.

OUTDOOR LINEAR LIGHTING PROFILES



Gardens, patios, terraces, façades; whatever the surface you have to light up, you will need a precise lighting element. On Archiproducts you can choose from a vast array of design outdoor lamps to suit all needs. From garden lamp posts, to outdoor pendant lamps, from floodlights for architecture, to underwater lamps for pools and fountains.

BOLLARD LIGHTS



Oono is a collection born in first instance as a family of exterior products, Oono is a family of dualities. It combines elegant looks with a warm diffused light effect. It couples the sturdy look of metal with the pureness of glass. It unifies exterior and interior, as the range offers IP-rated solutions for outdoor with straightforward surface mounted and pendant luminaires for indoors.

OUTDOOR STEPLIGHTS



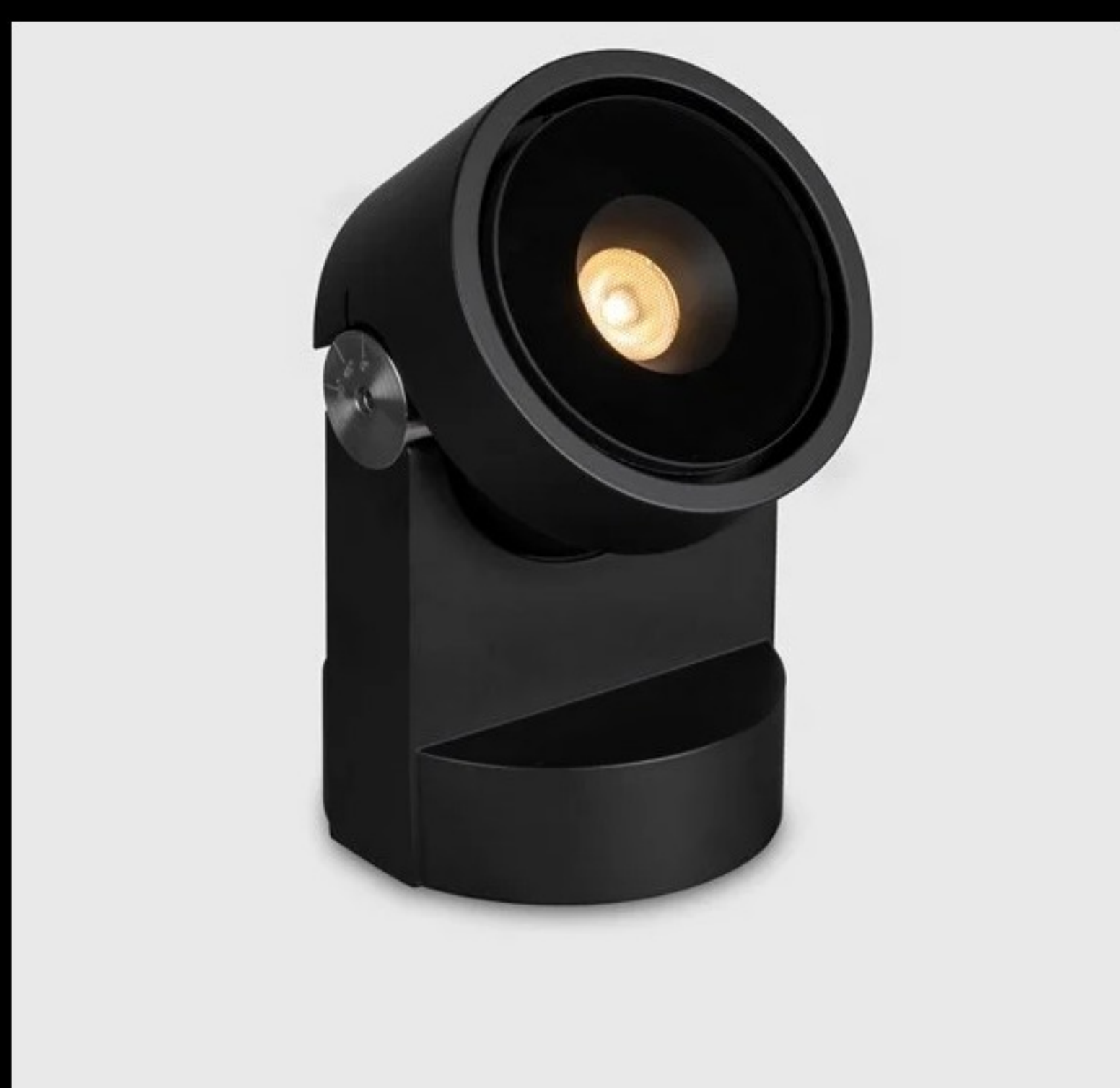
Wall spot is a versatile wall light for the bathroom, hallway, kitchen or living room. The wall spot has a perforated shade for a pleasant diffusion of light. Taking a stand for products with longevity, Vipp lamps are made to be fitted with a replaceable bulb, such as LED, giving them long-term functionality.

GARDEN LAMP POSTS



Garden lamp posts are an ideal solution to lighten the garden and create spots of lights in special corners of the outdoor space. On top of that, outdoor lamp posts match greatly with a classic style garden, enriching it with charm and elegance. Modern design elements featuring sleek metal structures and sharp lines, on their hand, combine efficiently with contemporary style environments.

OUTDOOR SPOTLIGHTS



In the process of choosing the lighting system for your outdoor it is crucial to opt for the light sources that best suit your external area. Outdoor spotlights emanate a strong and direct light in a sharp-edged way, allowing to create lighted paths, to light up the poolside, a house entrance and to mark potential staircase. There is a great array of outdoor spotlights to pick from.

OUTDOOR FLOODLIGHTS



Garden lamp posts are an ideal solution to lighten the garden and create spots of lights in special corners of the outdoor space. On top of that, outdoor lamp posts match greatly with a classic style garden, enriching it with charm and elegance. Modern design elements featuring sleek metal structures and sharp lines, on their hand, combine efficiently with contemporary style environments.

UNDERWATER LAMPS



Underwater lamps are the ideal solution to create a dramatic effect when lighting up fountains, swimming pools and water mirrors. Such special types of lamps are fully placed underwater and therefore must feature specific technical requirements.

STREET LAMPS



Street lamps light up urban parks and streets. There are of different types, varying by technical qualities, materials and modes of installation. Among the most modern models there are LED street lamps and solar energy street lamps.

LANTERNS



In order to enjoy your outdoor time to the fullest, choosing the right type of lighting is essential in order to make the space functional and usable. For diffused light scenes, suitable for creating suggestive outdoor atmospheres, it is possible to use special models of outdoor lanterns.